

We Welcome You To

SPICELAND FRIENDS CHURCH

August 4, 2024

Harvests are beginning to ripen, and gardens are producing richly. God of growth, may the seeds you plant in me through worship bear abundant fruit.

PRELUDE Tim Wilkinson, Pianist

WELCOME Sandi Swann

* WORSHIP IN SONG

"Holy Spirit, Thou Art Welcome" – #387

"Living for Jesus" – #605

Tasha Crandall, Song Leader

PRAYER OF INVOCATION

PRESENTATION OF OUR TITHES AND OFFERINGS

CHILDREN'S STORY Mike Van Osdol

All children will be worshipping with us until after the Children's Story. Preschoolers are invited to go to Jr. Church with Claudia Garner downstairs. Children (grades 1-5) may go with Jessica Noteboom to the Family Center. Nursery is available for parents with babies or toddlers.

SHARING OUR HEARTS

PASTORAL PRAYER David Brock

SCRIPTURE Debra Weber
Isaiah 43:16-21

MESSAGE Cathy Harris
"Something Old, Something New"

COMMUNION AFTER THE MANNER OF FRIENDS

"For I know the plans I have for you," declares the Lord, "plans to prosper you and not to harm you, plans to give you hope and a future. Then you will call on me and come and pray to me, and I will listen to you." *Jeremiah 29:11-12*

* SONG OF DEDICATION #635

"In the Garden"

* BENEDICTION David Brock

* POSTLUDE #76

"Jesus Is the Sweetest Name I Know"

* All who are able may stand

THIS WEEK'S ACTIVITIES

TODAY – We welcome **Cathy & Tom Harris** to our service today. Cathy was Associate/Co-Pastor at SFC from 2007-2019. She is currently pastor at Plainfield Friends Church.

MONDAY – DEADLINE FOR ARTICLES for the August/September newsletter.

MONDAY – WALKING GROUP – 10:00 a.m. in the Family Center.

WEDNESDAY – DRAPER LUNCHEON

WEDNESDAY – MUSIC COMMITTEE MEETING – 5:30 p.m.

THURSDAY – COMMUNICATIONS & PUBLICATIONS COMMITTEE – 9:30 a.m. to fold newsletters.

THURSDAY – BIBLE STUDY – 11:00 a.m. in the Mary M Room. **Nancy Wadman** will be leading a study of the book, *Unveiling Mary Magdalene* by Liz Curtis Higgs.

FRIDAY – WALKING GROUP – 10:00 a.m. in the Family Center.

ANNOUNCEMENTS

If you have a **Prayer Concern or Celebration** that you would like to share, please fill out, sign, and date a green card found in the pew rack and place it in the offering plate. You may pick up a sheet listing Prayer Concerns in the Welcome Center or at the west door.

ANNOUNCEMENTS

(Continued)

Sympathy – We extend our deepest sympathy to the family and friends of **Max Garner** upon his passing on July 30. Max was the father of Chris Garner and grandfather of Jack and Luke.

Scripture Readers are needed for the month of September. There is a sign-up sheet in the Welcome Center if you would be willing to read scripture.

199 Years and Counting: From the *New Castle Courier* in 1878: The elders of the Friends church should caution the ministers not to continue their sermons until everyone is tired out and restless. The good effect of the sermon last Sabbath was lost by its continuing at least half an hour too long.

Life Lifter to Share: Again Jesus said, **“Peace be with you! As the Father has sent me, I am sending you.”**



Happy Birthday to: Monica Altman, Harper Chandler (13th), August 5; Hunter Crandall (21st), Lorelai Altman (2nd), August 7; Paysen Pew (13th), August 8; Linda Brock, August 9.

Happy Anniversary to: Gib & Doris Hoover, August 5.

Greeter: Virginia Newkirk

Ministry Coordinator: Nancy Wadman

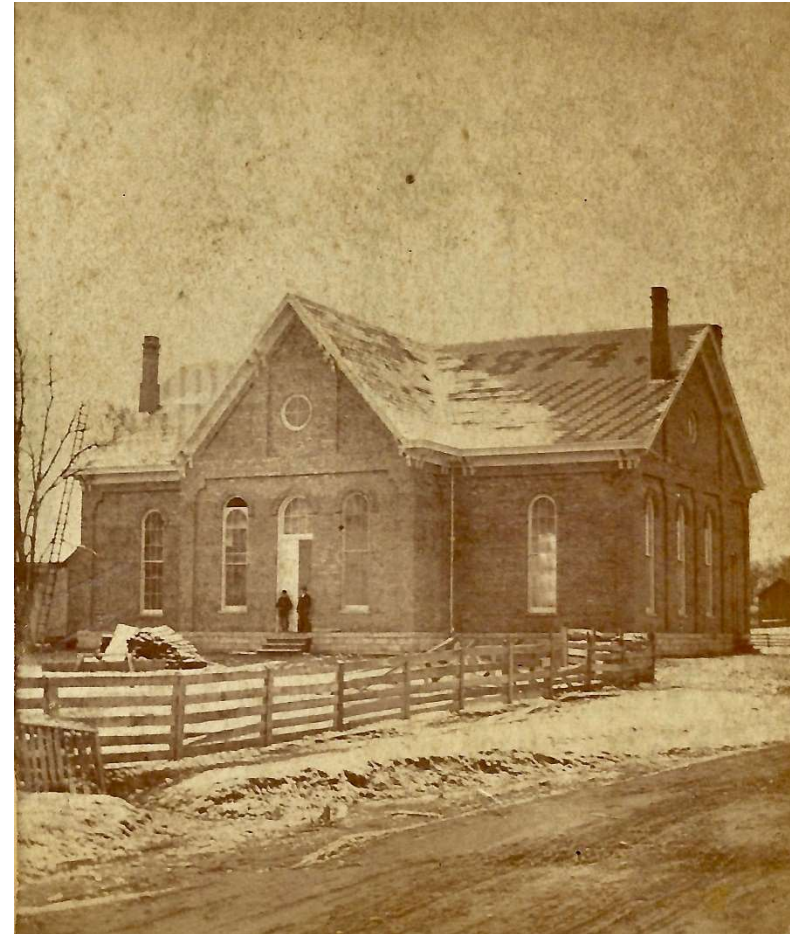
Communications Coordinator: Lisa Knotts



Weekly Devotional by Barb Meade at www.spicelandfriends.org

“When your mother asks, ‘Do you want a piece of advice?’ it’s a mere formality. It doesn’t matter if you answer yes or no. You’re going to get it anyway.” – Erma Bombeck

Spiceland Friends



Brick Meetinghouse Erected in 1874

401 West Main St., P. O. Box 27, Spiceland, IN 47385

Morning Worship – 10:30 A.M.

David Brock, Pastor
Cell: 524-4428

Eric Bowman, Associate Pastor
Cell: 524-8126

Church (765) 987-7835
E-mail: spicelandfriends@frontier.com
www.spicelandfriends.org